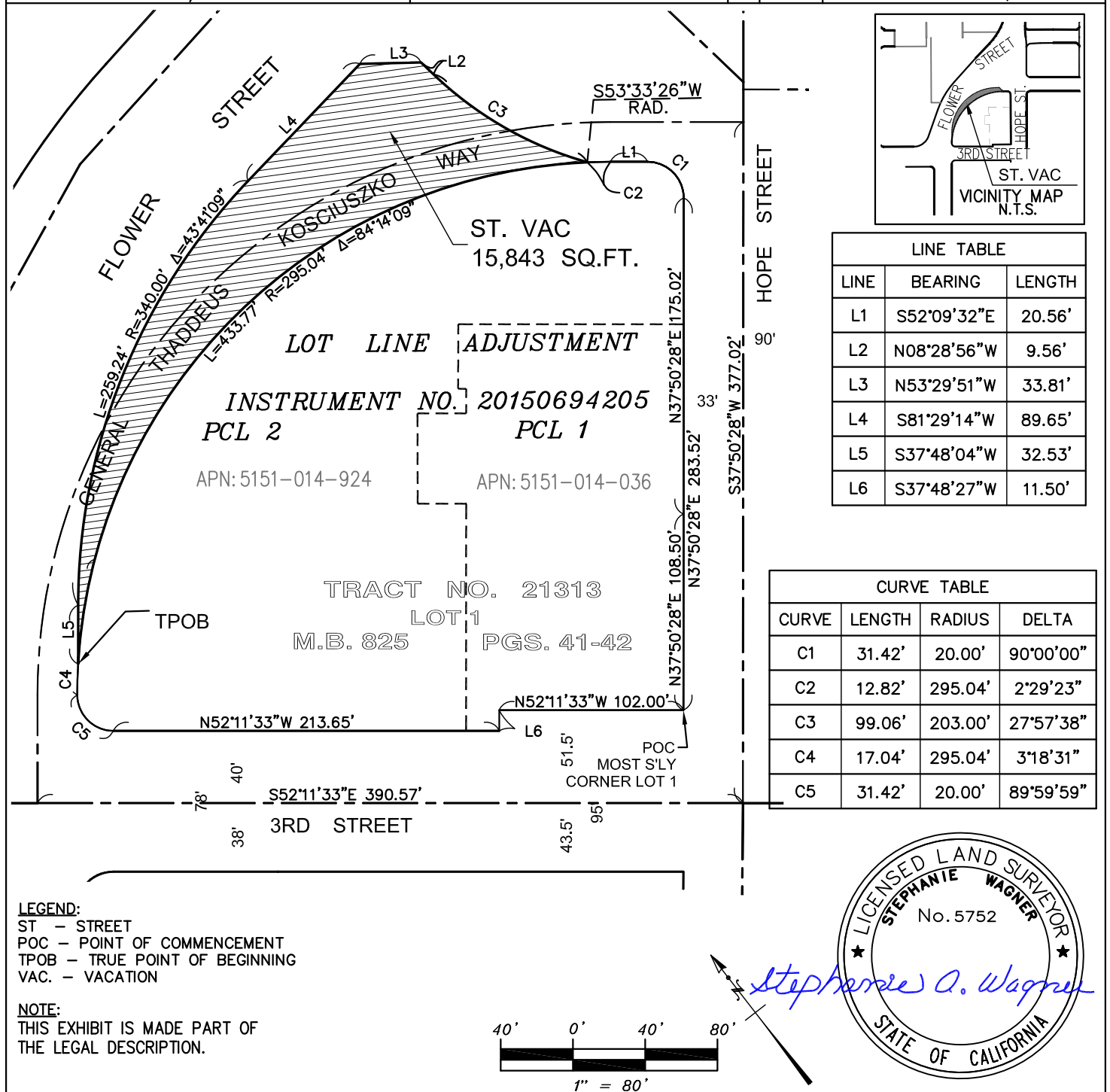


Grantor: CITY OF LOS ANGELES	THE DATA SHOWN ON PLAT ARE BASED ON FIELD SURVEY PREPARED BY WAGNER ENGINEERING & SURVEY, INC. DATED JUNE 2011 - JUNE 2012. BEARING AND DISTANCES ARE BASED ON CALIFORNIA COORDINATE SYSTEM NAD '83 ZONE 5 COORDINATES OBTAINED FROM CALIFORNIA H.P.G.N.		
Description: PORTION OF LOTS 5,6,7,14 THRU 17 IN BLOCK R, MOTT TRACT M.R. 14/7; PORTION OF LOT A, RANGELEY TRACT, M.B. 13/164			
Title Report: N/A			
Assessor's Ref: N/A	ROW Ref: EXB-R-103	No. Date	Revision Description



TOTAL AREA OF PROPERTY	STREET VACATION	REMAINDER PARCEL AREA	ESTATE
N/A	15,843 SQ.FT.	N/A	STREET VACATION
APPROVED BY: Metro		REGIONAL CONNECTOR	
PROJECT MANAGER		CITY OF LOS ANGELES	
PREPARED BY: WAGNER ENGINEERING & SURVEY, INC. 17134 Devonshire St., Suite 200 Northridge, CA 91325		DATE: 05/11/17	
CHECKED BY: Stephanie A. Wagner		SCALE: 1" = 80'	
LS.: 5752		REV. No. DATE:	
		REV. No. DATE:	
		PARCEL No. ST VAC	